

# Innovations 2009

Available in 3Q 2009

## Handset based DVB-H Testing

The usage of the Nokia N96 handset ensures full customer-perspective testing as well as all-in-one testing for DVB-H and conventional voice and data services. Data provided include RSSI, reception status, various counters e.g. for received frames and frame and packet errors.

Now available!

## FIMAS Post Processing Tool Evolution

### Hypercube Extensions

Hypercubes can improve database speed by a factor of 10 to 100. With the Hypercube extension, FIMAS keeps its excellent performance for reporting, analysis and drill-down of mass data.

New capabilities:

- Standard queries for geo visualisation become even faster than they already are, especially for large-areas
- With the built-in Excel®. ad-hoc queries using e.g. Pivot tables open new dimensions of mass data evaluation
- With the standardized MDX query language, usage of external visualisation clients and Data Warehouse systems becomes easy.

Available in 2Q 2009

## Multi-level Layer 3 and IP Trace Support

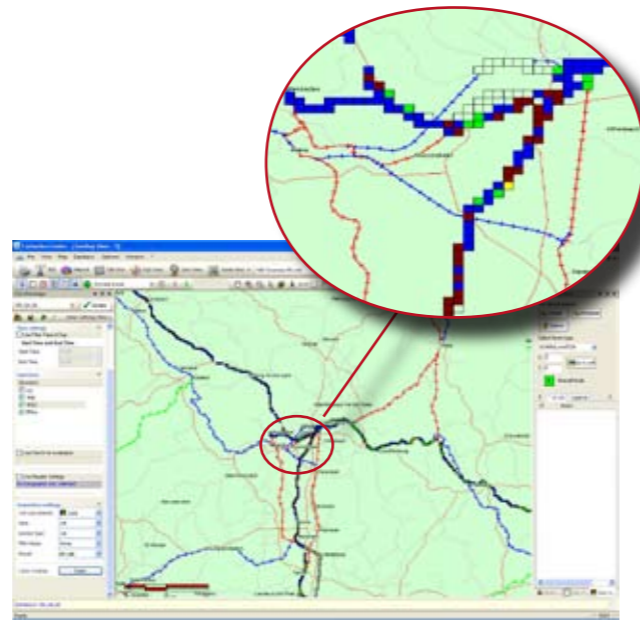
FIMAS offers versatile features for 2G and 3G Layer 3 analysis as well as for IP trace analysis by providing a performance-optimized intelligent multi-level storage and retrieval concept. From pure event type



**Focus Infocom**

Your Measurement Solution

level to hexdump storage and full-text decoding, the right choice for every situation can be made. In addition, IP Trace can, in the course of automated drill-down, even be extracted from measurement data files to 100% Wireshark®-compatible output, enabling budget-friendly usage of existing tools and existing skills.



Geographical view of L1 mass data

Available in 2Q 2009

## New Trace Mobile Support in all Products

In 2009, important new trace mobile types are supported in all products, from ACT autonomous testing through all 3GMA product variants to DMTS-based benchmarking solutions, Multibox autonomous systems and Load Generators. This includes trace variants of popular handsets such as the Nokia® N96 and new high-category HSUPA and HSDPA terminals.



**Focus Infocom**

Your Measurement Solution

**MOBILE™**  
WORLD CONGRESS  
Barcelona | 16-19 February 2009  
Exhibitor in Hall 2-0, Stand 2D97

**LTE Ready**

# Innovations 2009

## Find out new Products and Features for reliable and cost-efficient Testing and Analysis!

Focus Infocom's enhancements of proven tools and new products for efficient and reliable testing, benchmarking and post-processing.

Now available!

## Wideband AMR

Wideband AMR is one of the most important innovations in today's mobile communication networks for improved speech quality. With support of Wideband Speech Quality evaluation (ITU-T P862.2) and of wideband AMR related information in respective trace phones, Focus Infocom products are optimally suited to test these new features in the field and in laboratory environments. Focus Infocom also provides an OEM module designed to specifically test Wideband Speech Quality in automation environments.

Now available!

## Cost-efficient mobile or stationary Probing with ACT LE

ACT LE is a light variant of the proven ACT (Autonomous Coverage Tester) Black Box. It combines the proven features of an ACT Black Box with an economic and effective inside equipment for stationary testing: No battery and no attenuator. The PESQ module is available as bookable option. This makes it extra cost-efficient!



**The proven ACT Black Box now is available even as mobile or stationary probe ACT LE**

Features:

- Extreme mechanical robustness, stability due to Hardware Watchdog
- Bares a high temperature range
- Operation also with commercial mobiles possible

- Measurement from the end customer's perspective (entire Microsoft® Windows® interface)
- Easy upgrading for new mobile types or operating system versions

Now available!

## MNM – Multi Network Measurement System

MNM offers multi-network coverage measurement from customer's point of view. This means

- Excellent value for money due to usage of standard components
- Easily scalable
- Passive monitoring (no airtime cost)
- Fully automated operation
- Fully automated data transfer and import to post-processing tools

Now available!

## Real Microsoft® Outlook® Integration for E-mail Testing

This new feature provides a previously unachievable degree of user-perspective testing for e-mail. It supports POP3 as well as IMAP-based e-mail operation of an original Microsoft® Outlook®. It is available for all product types. It provides the full range of diagnostic and QoS reporting capabilities, including live QoS monitoring, integrated IP trace and fully synchronised drill-down and data visualisation.

Available in 2Q 2009

## VoIP Testing

Today there is a wide range of VoIP applications and specific solutions. The Focus Infocom VoIP testing concept provides a generic module for VoIP quality testing which is suitable for many different VoIP clients and operational environments.

Available in 2Q 2009

## Novel KPI Measurement Methods boosting Productivity

In conventional packet-services testing, the problem is that system throughput varies widely between technologies, making test case scheduling and spatial validity hard to achieve. With the new time-based testcase scheduling for PS services, these problems are solved. Almost effortlessly, throughput as well as roundtrip times can be measured in all access technologies from GPRS through EDGE to R99 WCDMA up to HSPA with full control of timing and testing density.

## 3GMA, ACT and DMTS

Now available!

## Automation Interfaces for Integration in Test Suites

New interfaces enable usage of 3GMA or DMTS in automation environments. This includes

- "Forced handovers" as well as other forcing actions
- CS Data transfer module is provided
- New command line interfaces for automatic export on fully configurable general data export, GSM Layer 3 and WCDMA RRC message, and Report/QoS level

Available in 2Q 2009

## Airborne GSM Testing

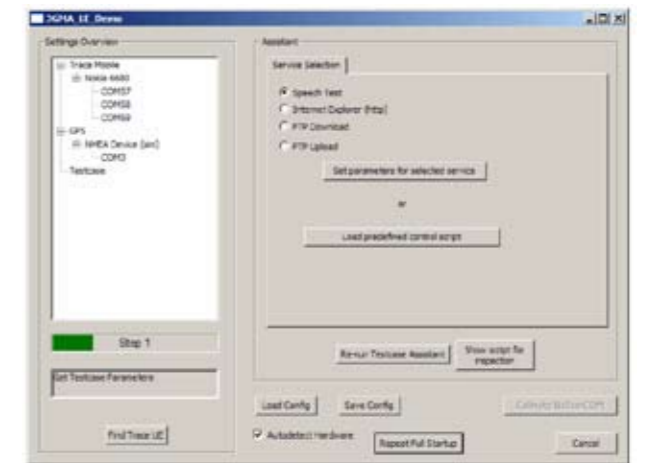
Based on the proven Load Generator extension architecture, this product variant provides additional functions for precisely controlled power-on and "Location Update Storms", and SMS mass sending. May be used with Trace and Commercial UE.

Available in 2Q 2009

## Fully self-configuring Systems

Set-up of tests is now even more effortless and easy for unskilled users with the LE modules. Two modules are available:

- LE Basic: Designed for "ad-hoc" operation of tests. Fully automated device detection for UE and GPS, step-by-step wizard-guided services test setup facility.



Select pre-defined script or Wizard

- LE Automatic: Designed for script-controlled operation. Fully automated multiple device detection, automatic adaptation of template scripts to hardware found. User-configurable hints and directions displayed on-line.

Available in 2Q 2009

## ASCI Feature Testing for GSM-Rail

With integration of brand-new Triorail GSM-R modules, Focus Infocom testing systems now open new possibilities in GSM-R testing by providing ASCI feature support. Based on the ACT Series 7 with extended certification for in-train operation, these systems offer

- Excellent robustness and operational stability
- A high degree of versatility and system scalability
- Maximum productivity and value for money
- By-design modularity and upgradeability